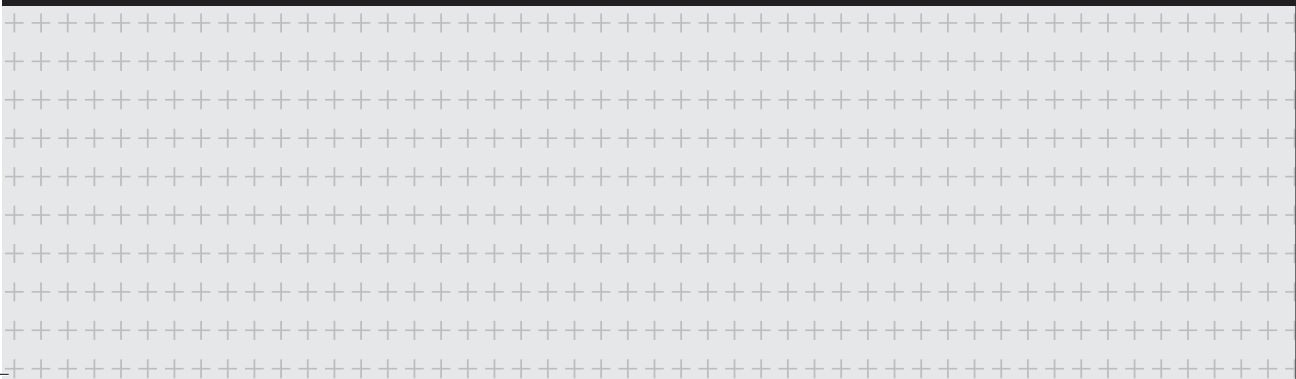


Unit **[01]** Sharks Are Not Mean



(Present Perfect) It has been

- *It has been* is a present perfect tense of *it is*.

Example

- It **hasn't drunk** the water.
- It **has worked** for three years.
- It **has never been** easy.
- It **has been** officially announced.
- It **has been** outside for recess.

+ Which is correct? All sentences are in present perfect tense.

1. It has (been activated / activating) for several months.
2. It has (been / being) famous for ten years.
3. It has (opened / opening) since 2005.
4. It has been (shown / showing) as if it's perfect.
5. It has (poured / pouring) water for five hours.
6. It hasn't (included / including) the primary objectives.
7. It hasn't (been / being) completed yet.
8. It has (fly / flown) to the airport at over 300km per hour.

+ Make a sentence with these words.

1. (this year / a lot of errors / It has caught) _____
2. (It hasn't / yet / been ironed) _____
3. (It has brought / a significant issue / us) _____
4. (any suggestions / It hasn't offered / yet) _____
5. (extremely expensive / for decades / It has been) _____
6. (It has finished / its updating process / already) _____
7. (It hasn't prepared / the upcoming attack / for) _____

Exercise

Choose three sentences from the answer and say them in 3 seconds to your teacher without your book.

Unit 01 Sharks Are Not Mean

UNIT 01

The shark has been present for hundreds of years and can be found in various parts of the sea. Although sharks are classified as fish, they differ in that they have no bones; instead, their skeletons are made of cartilage.

Sharks come in various sizes, ranging from just a few inches to the largest fish in the world. Typically, sharks have a streamlined body shape, aiding them in swift swimming for hunting. They often use camouflage as a defense mechanism to protect themselves. Additionally, some sharks defend themselves by inflating their bodies with air or water, making themselves appear larger and preventing attacks from predators.

A shark propels itself by moving its tail from side to side and uses its fin for steering, turning, and maintaining balance. The dorsal fin, in particular, helps it stay upright. Additionally, the dorsal fin serves as a **helpful** indicator for people to notice when a shark is nearby.

The shape of a shark's teeth depends on the type of food **★it** eats. Most sharks have multiple rows of teeth. When one tooth breaks off, another one moves up to replace it. While most sharks primarily feed on fish, some of the largest sharks **consume** sea lions, dolphins, and other sharks. Other sharks

feed on clams and crabs, using their flat teeth to crush and grind shells.

The shark has become a symbol of ferocious animals, largely due to newspapers sharing stories of shark attacks on humans. However, only a few species of sharks are known to regularly attack humans. One of these species is the great white shark. Great white sharks typically prey on large animals. Most shark attacks on humans occur when people enter shark territory. Many sharks engage in what is known as a “test bite” and then swim away upon realizing that the human is not their intended target.

People hunt sharks for many reasons. Sharkskin is used to make shoes and wallets. Shark oil is used in many cosmetics. Its teeth are used to make jewelry. Chefs use shark fins to make a popular soup, and the shark usually dies when its fins are removed.

Sharks do not reproduce nearly as rapidly as other fish. When they are killed, it takes much longer for their populations to recover. They deserve the right to exist just as much as any other animal.

UNIT 01

Vocabulary

| | |
|------------------------|--|
| ▪ defend [v] | to fight in order to keep safe People fought to defend their country. |
| ▪ various [adj] | many different My parents wanted to try various desserts. |
| ▪ depend [v] | to be decided by The value depends on how rare it is. |
| ▪ prevent [v] | to stop something from happening or someone from doing something The police prevented the man from escaping. |
| ▪ balance [n] | a state where things are of equal weight or force Try to have a balance between work and play. |
| ▪ symbol [n] | an action, object, event, etc. that expresses a particular idea A heart shape is the symbol of love. |
| ▪ target [n] | a person, place, etc. that an action is directed or intended for He was the best target for bullies. |
| ▪ popular [adj] | liked, enjoyed, or supported by many people Humorous people are popular in society. |
| ▪ indicator [n] | a sign that shows the condition of something A fever is an indicator of illness. |
| ▪ notice [v] | to be aware of; observe I notice a beautiful rainbow in the sky after the rain. |

Reading Comprehension

[1~3] Choose the right word for the blank below.

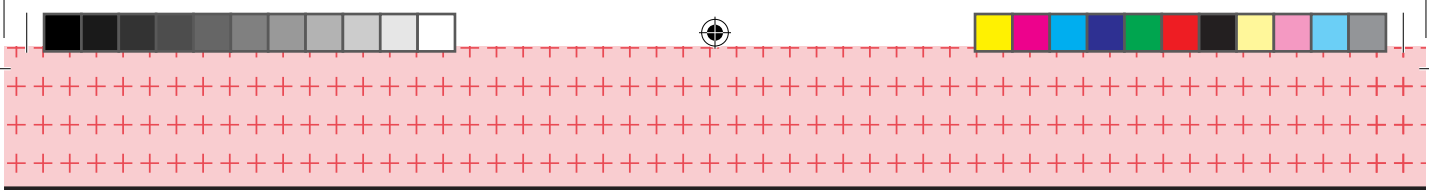
Sharks can be found from many parts of the sea. They are 1. _____ in size and have powerfully shaped bodies to swim faster. They swim by using their 2. _____. The shape of a shark's teeth depends on the kind of food it eats. Sharks do not 3. _____ nearly as quickly as other fish.

1.
 - a. various
 - b. virtual
 - c. vary
 - d. vast

2.
 - a. take
 - b. nose
 - c. tall
 - d. tail

3.
 - a. replace
 - b. reproduce
 - c. rejoin
 - d. reduce

4. What is the passage mainly about?
 - a. Characteristics of sharks
 - b. Various sizes of sharks
 - c. Reasons for hunting sharks
 - d. Stories of shark attacks on humans



[5~7] Write T if statements are true or F if statements are false according to the passage.

5. People hunt shark for various reasons.

6. Sharks swim by moving their tails from side to side.

7. The shape of a shark's teeth is same for every shark.

8. The word **helpful** in the passage is closest in meaning to
a. useful
b. useless
c. accessible
d. kind

9. The word **consume** in the passage is closest in meaning to
a. buy
b. waste
c. absorb
d. eat

10. All of the following are false EXCEPT:
a. Sharks have bones as other fish.
b. A streamlined body shape helped sharks swim fast.
c. Inflating bodies with air or water is one of the ways of hunting.
d. Sharks use their tails for steering, turning, and keeping balance.

11. All of the following are true EXCEPT:
- a. The dorsal fin of a shark indicates that a shark is nearby.
 - b. The shape of a shark's teeth is decided by the type food it takes.
 - c. Sharks use flat teeth when they feed on clams and crabs.
 - d. Shark reproduce as quickly as other fish to recover their population

12. What does ★it in paragraph 4 refer to?
- a. shark
 - b. fish
 - c. people
 - d. pattern

13. What can be inferred from the passage?
- a. Sharks do not normally hunt people.
 - b. Many environmentalists criticize shark-hunting.
 - c. The great white shark is the most famous species.
 - d. Shark population decreased because of pollution.

14. According to the passage, when do most shark attack on humans happen?

.....

.....

.....

15. According to the passage, how is sharkskin used?

.....

.....

.....

CHECK LIST ✓

Date: . .



Video Lecture

- Have you watched the video lecture at least 2 times before the class?
- Have you watched the video lecture after the class?



Vocabulary

- Did you study the vocabulary listed next to the reading passage?
- Did you review what you got wrong on this unit's test?



Grammar

- Have you understood the points of this unit's Grammar Exercise?
- Have you answered the questions on the Grammar Exercise?
- Please review what you got wrong. Did you understand why you got wrong?



Reading Comprehension

- Have you read the stories carefully?
- Have you answered all the questions on this unit's reading comprehension?
- Did you figure out all of the exact reasons (or supporting details) for each question's answers?
- Please review what you got wrong. Did you understand why you got wrong?

Teacher Signature

Parent Signature



MEMO

A large white rectangular area with rounded corners, containing a grid of red plus signs. The grid is composed of 20 columns and 20 rows of plus signs, providing a guide for handwriting or drawing.

